

V9

# Promodag Reports

for Microsoft® Exchange Server



PROMODAG

## Reporting on Exchange made simple !

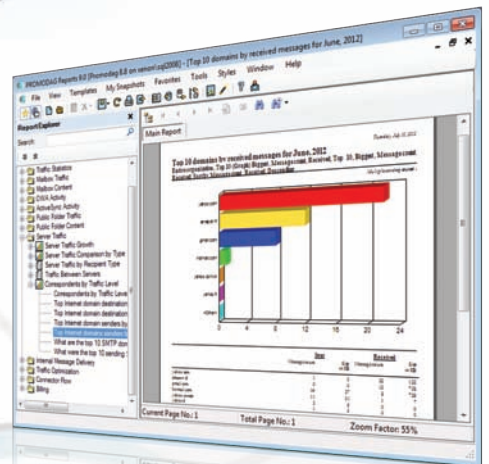


**PROMODAG Reports** contains a comprehensive and versatile range of traffic analysis, message tracking and planning tools that simplify and automate the process of managing email usage, ensuring compliance and optimizing the performance of your mission - critical email systems.

As a specialist in reporting on Exchange systems, we provide a wide variety of reports and options to meet a truly extensive range of reporting requirements designed to provide you with control of your Exchange messaging systems.

### Customer interaction has been the driving force of PROMODAG Reports from the outset.

They told us of easier ways to access important data, showed us the range of options needed to meet their reporting needs, and insisted on report designs that often confronted our own assumptions about how to design a product. The result is a product that enables our customers to manage their Exchange systems in the way they want. Download an evaluation version and see for yourself.



### Key Report Categories

#### ► Compliance

Using a wide range of flexible criteria, you can quickly and specifically respond to HR and governance requests. For instance, you can reliably track messages by key word, size, date range and many other criteria without the need for Exchange add-ons or specific appliances.

#### ► Traffic Analysis and SLA Reporting

The tools to manage usage globally, by server, by mailbox, by department, by country and many other criteria are readily to hand. Thus by accessing and comparing historical data across criteria customized to your organization's needs, you can swiftly and automatically identify and avoid problems before they become an issue.

#### ► Chargeback

The industry's most flexible email chargeback solution with the ability to assign charges by traffic volume, traffic type, storage space, number of mailboxes, meeting room or other criteria. For additional flexibility, add threshold-based charging, combine and weight multiple criteria to assign percentage costs to users, and even generate charging reports in the currency of your choice.

#### ► Capacity Planning and Exchange Migrations

Obtaining a detailed inventory of your current resources together with a good understanding of historical and current email trends ensures you can identify potential bottlenecks and avoid the many pitfalls of a badly planned upgrade or migration. By assessing usage, traffic types, attachment sizes you can save your organization money by optimizing resource usage and efficiently planning for future growth

- **PRICING** is per analyzed server, no matter how many mailboxes you have.
- **AGENTLESS** with nothing to install on the Exchange server.
- **EASY** to install and configure, a standard workstation is all you need.
- **SUPPORTS** all versions of Exchange server.
- **MORE** than 80 reports with multiple options.
- **TRAFFIC** and content reports down to message level.
- **OUTLOOK WEB ACCESS** and **ACTIVESYNC** reports.
- **MAILBOX** and public folder content reports.
- **INFORMATION** store size reports.

V9

# Promodag Reports

for Microsoft® Exchange Server



## Reporting on Exchange made simple !



### Key Features

- ▶ Reports come in tabular or graphical format with many configuration options to suit your specific information requirements.
- ▶ Reports can be exported to different formats: HTML, PDF, XLS, CSV, RTF, MHT.
- ▶ Reports can be sent by email, published in a public folder, a Web site or to a SharePoint document library.
- ▶ Individual mailbox reports can be automatically sent to the user or manager.
- ▶ Reports options can be saved for instant access using the Favorites menu.
- ▶ Mailboxes can be selected based on various Active Directory attributes (server, department, OU...).
- ▶ Reporting periods can be restricted to specific days or business hours.
- ▶ Data collection, report generation, export and publication can be automated and scheduled.
- ▶ The data repository can be an Access or SQL Server database.

### Benefits

- ▶ Find out how, when and by whom the system is used or misused.
- ▶ Check for compliance with organizational policies.
- ▶ Prevent email and resource-constraint problems from occurring.
- ▶ Optimize system configuration and design in response to changing traffic patterns.
- ▶ Plan upgrades based on a reliable understanding of electronic mail usage and needs.
- ▶ Generate chargeback reports using multiple usage criteria, weightings and thresholds.
- ▶ Ensure Service Level Agreements are met.

### Additional Language Support

The product is available in English, German and French. Reports can also be generated in Spanish, Italian, Dutch and Portuguese.

### Licensing

**PROMODAG Reports** is licensed for one Exchange organization, on a cost-effective per analyzed server basis. A license is established for at least one Exchange server and one console (administration workstation) with three different editions to meet the needs of all organizations.

**Standard** for single-server organizations using Microsoft Access database as the data repository.

**Professional** for multi-server organizations also using Microsoft Access database as the data repository.

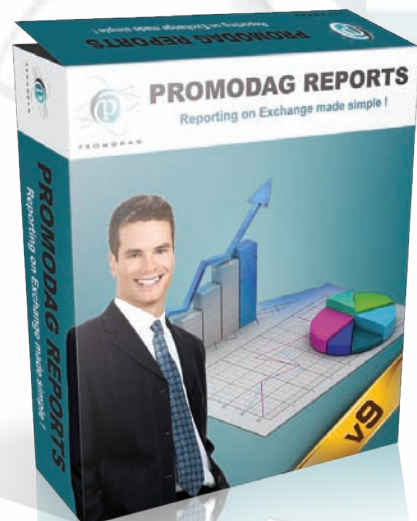
**Enterprise** for multi-server organizations. In this edition, the data repository is a Microsoft SQL Server database.

### Contact

**PROMODAG SA** Tel: +33 1 53 27 66 60  
 22 bis rue de la Réunion Fax: +33 1 53 27 66 59  
 75020 Paris Email: [sales@promodag.com](mailto:sales@promodag.com)  
 FRANCE Web: [www.promodag.com](http://www.promodag.com)



ISV/Software Solutions



Download an evaluation version:  
[www.promodag.com](http://www.promodag.com)

© 2012 Promodag. All rights reserved. Information subject to change at any time without prior notice. This document is for informational purposes only. PROMODAG makes no warranties, express or implied, in this summary.

### System Requirements

- ▶ Windows 7, 2008 R2, Vista, 2008, XP, 2003.
- ▶ 2 Ghz Pentium Processor.
- ▶ 1 GB RAM.
- ▶ Microsoft Outlook 2010, 2007, 2003, XP.
- ▶ Microsoft SQL Server 2012, 2008 R2, 2008, 2005 for the Enterprise edition.

### Supported Exchange Versions

- ▶ 2010, 2007, 2003, 2000, 5.5. With absolutely nothing to install on the Exchange Server.